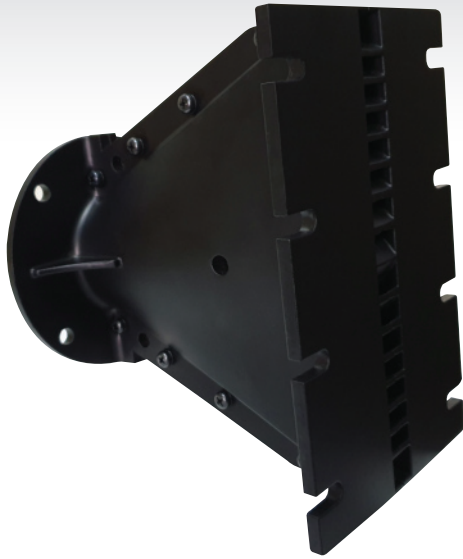


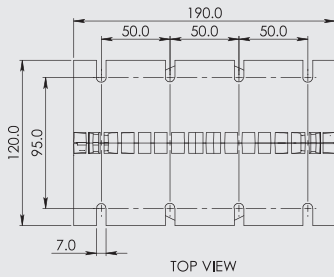
PH-CL25

High Frequency Line Array Devices

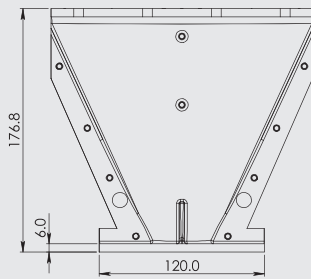


Features

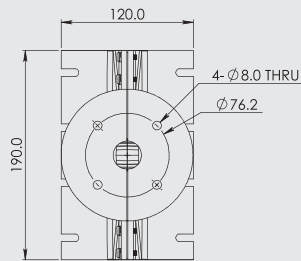
- 1.0" throat entry
- Line array optimized waveguide
- Die cast aluminium
- Cut off frequency 1500 Hz



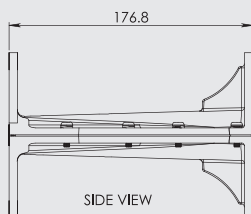
TOP VIEW



FRONT VIEW



BOTTOM VIEW



SIDE VIEW

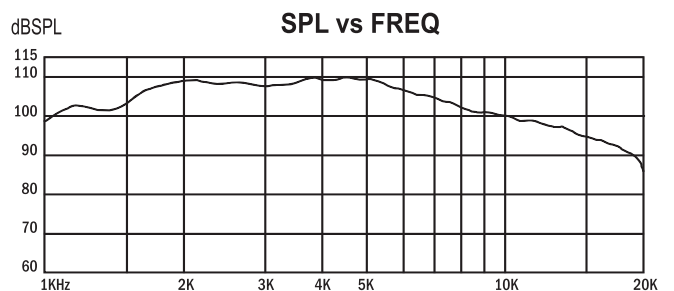
GENERAL SPECIFICATIONS

Throat Diameter	25 mm / 1 in
Nominal Coverage Angle (HxV)	
Cutoff Frequency	1500Hz
Mounting Type	Bolt on
Material	Die cast Aluminium
Unit Weight	1.5 kg / 3.3 lb
Shipping Weight	1.8 kg / 4 lb
Packaging Dimension (WxDxH)	193x123x187 mm 7.6x4.8x7.4 in

MOUNTING INFORMATION

Overall dimensions	
Mount height	120 mm / 4.72 in
Mount width	190 mm / 7.48 in
Depth	177 mm / 6.97 in

Frequency response and Impedance curve



Response of horn with BM-D446



STH PROFESSIONAL AUDIO CO.,LTD.

AIA Sathorn Tower, unit 1607-1608, 16th floor, No.11/1, South Sathorn Road, Yannawa, Sathorn, Bangkok 10120